



Breast Augmentation

Type of Procedure : **Breast** (Plastic Surgery Thailand)

[Print version](#)

Plastic Surgery Thailand - Breast Augmentation

Transsexual Sex reassignment surgery/Sex change surgery

"Vaginoplasty (sex reassignment surgery/sex change surgery) is a dramatic and irrevocable final step in male to female gender transition. This step is usually taken only after the deepest introspection and counselling regarding all the options. For those needing complete gender correction, this surgery is a life saving and life enhancing miracle, and can enable them to live a full and joyous life afterwards."

<http://ai.eecs.umich.edu/people/conway/TS/SRS.html>

-Service Inclusions-

Surgical Fee

- Pre-surgery night and one night recuperation in hospital.
- Doctor fee
- Clinical interview/surgery consultation.

Post Operative Care

- All medicine supplies
- Postoperative check-up at the Institute on a follow up appointment. You will also need to massage the breast to prevent capsular contraction of the breast.
- There is no extra cost if any correction or additional checkups are required.

Travel Arrangements

- Hotel booking and free transportation between airport and hospital.

[back to top](#)

-Facts at a glance-

Surgical Procedure

• Our surgeons prefer to make the incision in the crease of armpit, since in most cases the scar is almost invisible. The incision is made with a special instrument designed to create a space for the implant. The extent of the incision must be smooth and appropriate for the size of the implant. After surgery, a bandage will be applied over your breasts for two days after surgery to speed up healing.



Types of Implants

• All breast implants utilize a silicone shell but contain different kinds of filler, gel or saline. The outer silicone shell may be smooth shiny and polished, or a slightly rough texture. Breasts augmented with the

textured implants are less likely to develop contracting capsules than those with the smooth implants.

Placement of Implants

- There are two techniques for placing implants.
 1. The implants are placed under the breast tissue and over the chest muscle.
 2. The implants are placed under the chest muscle and breast tissue.
- These two options should be thoroughly discussed between the patient and the surgeon.

Duration of Operation

- Thirty minutes to one hour

Risks and Complications

- Capsular contracture can occur if the capsules around the implants begin to tighten and thicken. This will cause the breasts to feel hard and appear unnatural. Hard breasts can be treated in several ways. Sometimes removal of the capsule is required, or perhaps the implant needs to be replaced. Bleeding is usually minimal during the operation. In an unusual case, bleeding after surgery may cause a large blood clot that needs to be removed. Infection is an uncommon risk. However, if a breast becomes infected, the implant must be removed immediately. You need to wait for several months before repeating the operation.

Recovery and After Care Treatment

- All dressings and bandages are removed on the third day following the operation. Afterwards, the patient is free to bathe as usual.
- The patient is requested to gently move the implants upward, downward, and inward in order to decrease the chances of capsule contracture.
- Only gentle massaging is recommended. Overly aggressive manipulation of the implant or strong squeezing can possibly cause an inflammation, thus producing an adverse effect on the capsules.
- During the first month following surgery, you should exercise your implants three to four times per for fifteen to twenty minutes. After that, if breast contour improve satisfactorily, you will need to exercise only once or twice daily.

Results

- Breast augmentation increases breast size and may also balance your body proportions. Clothes may fit better, and you may also experience an increase in confidence and self-esteem.

Hospital Admission

- One night admission to hospital.

Anesthetic

- General anesthesia that renders the patient unconscious

Pre Operative Assessment for Size and Placement of the Implant

- Our goal is to augment your breast to a size in better proportion to your physique and maintain a natural look.
- The size and placement of the implant we choose will depend on many factors, such as your original cup size, your desired cup size, and your physique including chest muscle.
- If you have only a small amount of breast tissue and want to enhance the tissue much as possible, it is recommended that a large implant is placed below the muscle in order to prevent the feeling or appearance of the implant. There is also less chance of capsular contracture.
- If you have large chest muscles as a result of exercising, the implant should be placed above the muscles in order to allow for comfortable movement and a natural look.
- For patients with mild to moderate breast sagging, larger implants placed over the muscle is recommended. The larger the implant, the greater and more favourable the augmentation.

Post Operative Care

- For at least three to five days upon surgery, try to keep arm extension to a minimum. After removing the gauze dressing, you may be required to wear a support bra to help your breasts form and maintain a

pleasing and balanced shape. You will probably be able to resume exercise and normal physical activities within a month or two when soreness has subsided.

[back to top](#)

-Preparation-

Medical Documents

- Completed all medical tests (blood pressure, BUN, CBC, chest x-ray, EKG, HIV)
- Plastic surgery thailand - Breast Augmentation with Dr. Saran Wannachamras bangkok, Thailand.

Passport and Visa

- Please forward the copy of your passport to us before the arriving date.
- US citizens can call San Francisco information (415) 744-4444 or you can search under "U.S. Government offices" in the white pages to find the phone number of your local passport office.
- For most tourists, a stay of no more than 30 days does not require a VISA. For further information on Thailand's entry/exit requirements, please contact the Thai consulate in your country or your travel agent.

Flight Arrangement

- Our recommended airlines are Thai International, Northwest, Lufthansa, Singapore, and EVA which has wide seats.

Expenses

- If you are HIV positive, then you are a risk to hospital personel. For this reason you need to pay an extra 30% to the original charge.

Airport Immigration and Customs

- Please present the supporting documents confirming the scheduled operation upon request. Please do not carry any unnecessary drugs or dangerous objects in your luggage.

Appointment

- The operation can be arranged once you have all required papers ready. Just inform us of your earliest convenient date prior to arrival, either by [clicking here](#) to contact us via e-mail.

[back to top](#)

-Frequently Asked Questions-

FAQ : Criteria

Who is a candidate for Breast Augmentation?

In general, the best candidates for breast augmentation are:

- 18 years of age or older
- Not currently pregnant or nursing
- In good physical health
- Psychologically stable
- Wanting to improve their appearance
- Realistic in their expectations
- Having this surgery for the first time

The above is only a partial list of the criteria that your surgeon will consider in determining whether or not this procedure is appropriate for you. Be sure to ask your surgeon if he / she considers you an ideal candidate for breast augmentation.

FAQ : Surgical Procedure

What is Breast Augmentation?

Breast augmentation is a surgical procedure designed to increase the size of the breasts. Implants are placed either directly behind or in front of the chest muscle in order to enhance bust size.

How should I prepare for surgery?

In some instances, your plastic surgeon may recommend a baseline mammogram before surgery and another mammographic examination some months after surgery. This will help to detect any future changes in your breast tissue. Following breast augmentation, you will still be able to perform breast self-examination. If you are a smoker, you will be asked to stop smoking well in advance of surgery. Aspirin and certain anti-inflammatory drugs can cause increased bleeding, so you should avoid taking these medications for a period of time before surgery. Your surgeon will provide you with additional preoperative instructions. Breast augmentation is usually performed on an outpatient basis. If this is the case, be sure to arrange for someone to drive you home after surgery and to stay with you at least the first night following surgery.

Can I combine this with other procedures?

A major trend in the last few years is for patients to have more than one operation at the same time. This reduces cost and means you only have one period of recovery and pain. Except in rare cases, this does not significantly increase the risks of surgery.

Which part of skin would be transplanted?

For Breast implant we do not use skin implant, but we using the technique which is insertion the textured implant into underneath the chest muscle so no skin implant.

How long is the recovery period?

Most women can expect to return to work within a few days to one week. Exercise can typically be resumed three to four weeks following surgery.

FAQ : Result

What can I expect from my breast augmentation?

Breast augmentation will make your breasts fuller and enhance their shape. You will find it easier to wear certain styles of clothing. Like many women who have had breast augmentation, you may feel a boost in self-confidence.

Will I be able to breast-feed?

Yes. There is no evidence that breast implants will affect the pregnancy or your ability to breast-feed

FAQ : Pre Operative

Do I need any special tests or X-rays?

If you are in good health and you want a local anesthetic, you may not need any special tests or X-rays. If you suffer from a serious illness, such as diabetes, your surgeon may order tests or suggest you see your treating physician. If you are going to have a general anesthetic, the anesthesiologist may order special tests to prepare for the anesthetic. Most plastic surgeons take photographs before and after surgery. If you are over 35 you should have a mammogram.

FAQ : Post Operative

How will I look and feel initially?

A day or two after surgery, you should be up and about. Any dressings will be removed within several days, and you may be instructed to wear a support bra. Your plastic surgeon will probably permit you to shower between three and seven days following surgery. Stitches will be removed in about a week. Some discoloration and swelling will occur initially, but this will disappear quickly. Most residual swelling will resolve within a month.

Where is the scar going to be?

The scar for a breast enlargement is placed in the crease lines in one of three locations under the breast, around the nipple or in the armpit. It is usually about two inches long. All surgery requires a scar and all scars take time to soften and fade. You will not see the final appearance of your scar for a year after surgery. It is usually red and raised for the first month or two after your operation.

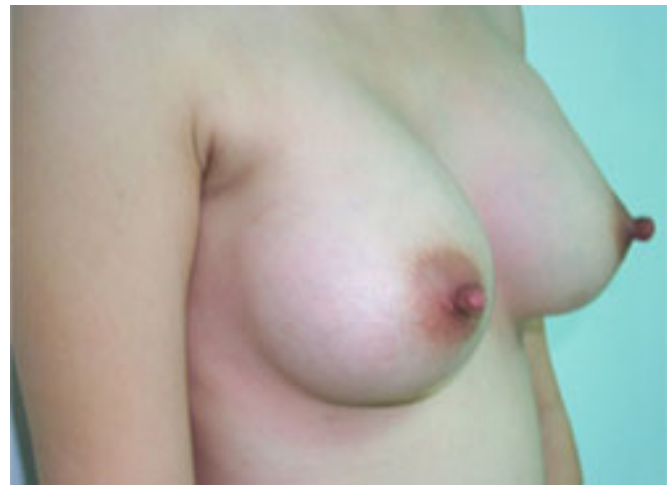
How will I feel emotionally after surgery?

Some patients feel emotional after surgery. Some even become depressed or anxious. If this happens to you do not feel you are alone or frightened. It will almost certainly pass. Talk to your doctor about it. If it becomes persistent or serious your doctor can help you find a counselor.

[back to top](#)

-Photo Gallery-

Plastic Surgery Thailand : Breast Augmentation





[back to top](#)

Useful Links

[Dr.Preecha Tiewtranon - PREECHA AESTHETIC INSTITUTE \(PAI\)](#)

[Male to Female Sex Change Surgery](#)

[Vaginoplasty](#)

[Sexual Reassignment Surgery](#)

The number is +662 693-9391

[To contact us now, click here!](#)

[Sex Reassignment Surgery Home](#) | [Male to Female](#) | [Sigmoid Colon](#) | [Upper Eyelid Surgery](#)
[Lower Eyelid Surgery](#) | [Full Face Lift](#) | [Mini Face Lift](#) | [Forehead Lift](#) | [Rhinoplasty Augmentation](#)
[Alaplasty](#) | [Cheek Bone Contouring](#) | [Cheek Augmentation](#) | [Chin Augmentation](#) | [Chin Shaving](#)
[Ear Surgery](#) | [Botox or Fat Injection](#) | [Hair Transplant](#) | [Breast Augmentation](#) | [Breast Reduction](#)
[Liposuction](#) | [Lipectomy](#) | [Adam's Apple Contouring](#) | [Fat Injection](#) | [Get Started with SRS](#)
[Sex change surgery](#) | [FAQ](#) | [Sexual Reassignment Surgery Photo Gallery](#) | [Glossary](#) | [Meet the doctor](#)

[Plastic Surgery Thailand](#)

Copyright 2003 www.doctorsaran.com All rights reserved.

[Contact Us](#)